



South Hill Park, Hampstead NW3
£1,650,000 Share of Freehold.

AMBERDEN
ESTATES



South Hill Park, Hampstead NW3

A large, beautifully presented 4 bedroom upper maisonette (1,500 sq Ft), with a private entrance and a west facing balcony.

The maisonette is situated in the popular South Hill Park Conservation area, and set over the first, second & third floors of a Victorian property, above commercial premises. The property has lots of original features, wooden floors and a stunning master bedroom with a vaulted ceiling opening to a west facing balcony.

17' x 17' reception opening to kitchen/breakfast room • 20' master bedroom & ensuite shower room opening to • 16' west facing balcony • 3 bedrooms (1 ensuite)
• bathroom • private entrance • share of freehold • residents permit parking
• EPC rating D

The property is less than 400 feet (120 metres) from Hampstead Heath and South End Green is a on the door step, with a great mix of cafes, pubs, neighbourhood restaurants and shops including delicatessens and Marks & Spencer. Hampstead Village is approximately 0.5 miles.

The Hampstead Heath London Overground Station is less than a minutes' walk and travel to Canary Wharf requires just a single change. The closest London Underground station is Belsize Park (Northern Line), 0.7 miles - approximately a 13 minute walk. There are also frequent bus and night bus services from South End Green.

£1,650,000 Share of Freehold.

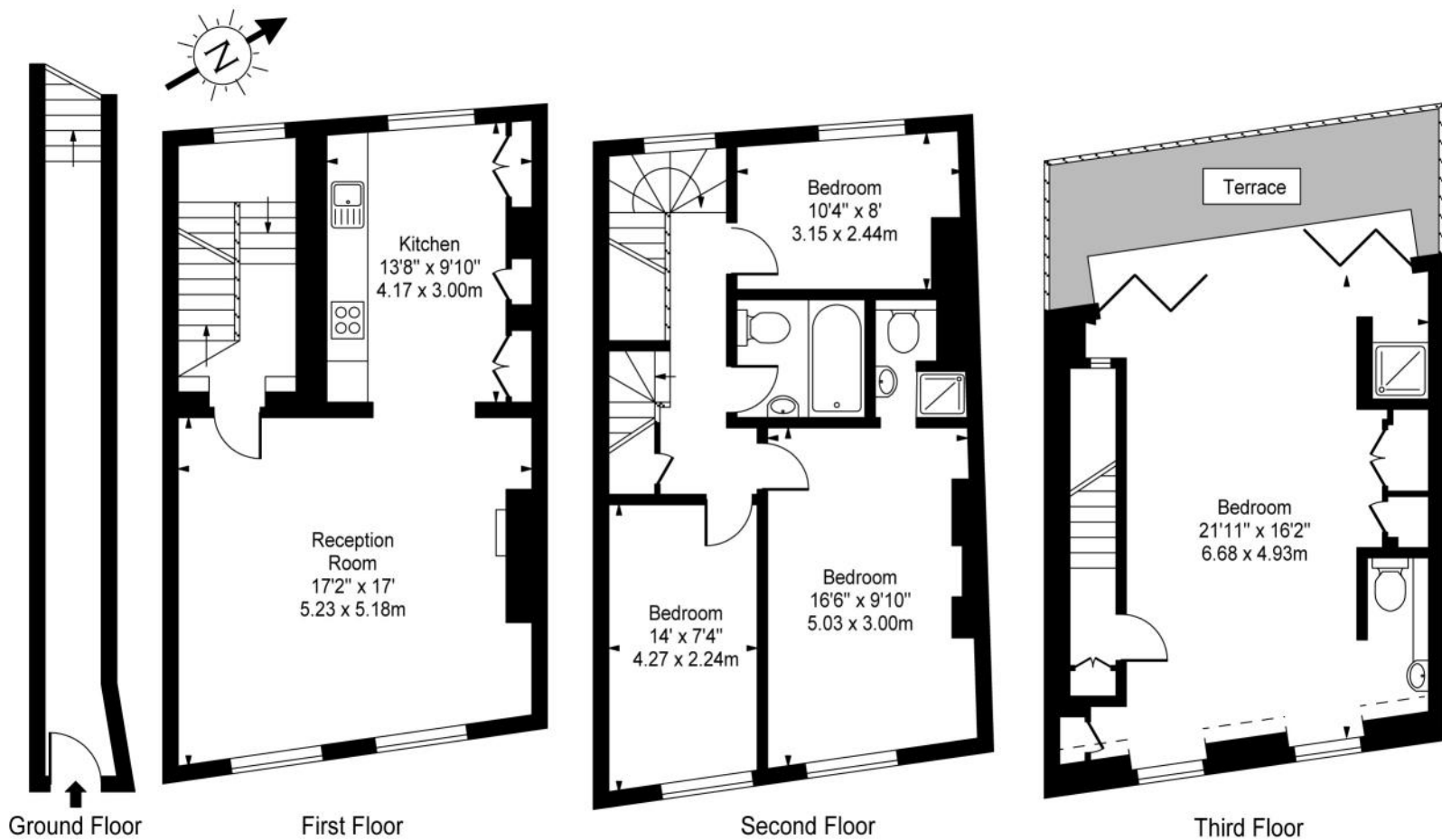








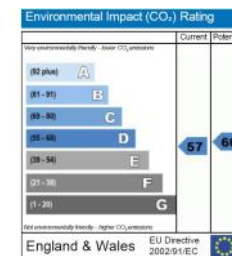




Approx. Gross Internal Area
1,511 Sq Ft - 140.37 Sq M

For Illustration Purposes Only - Not to Scale
Floor Plan by www.nogaphotostudio.com

This floor plan should be used as a general outline for guidance only. Any intending purchaser or lessee should satisfy themselves by inspection, searches, enquiries and full survey as to the correctness of each statement. Any areas, measurements or distances quoted are approximate and should not be used to value a property or be the basis of any sale or let.



Telephone 020 7794 7794

